

# care today

01

Contributing to the well-being, dignity and livelihood of needy individuals, families and communities in Singapore

**29,000**  
Direct beneficiaries

Since 2009

Touching lives of

**1.2 million**  
households

02

Supporting outcome-based programmes and initiatives for positive social impact

**95**  
Programmes

Since 2009

Piloting Models of Care  
for the Future

# for tomorrow

*Reflection*  
2015 — 2016

EMASEK  
**Tcares**

01	Key Highlights FY2015/2016
02	Chairman's Message
06	Board of Directors
08	Programmes for FY2015/2016
38	Management Notes
40	Programme Listing and Contacts

## Mission and Strategic Thrusts

The purpose and mission of Temasek Cares is to contribute to the well-being, dignity and livelihood of needy individuals, families and communities in Singapore, through the following thrusts:

### 1 **Building People**

Through support with dignity for individuals and families in times of need.

### 2 **Building Capability**

Through education, training and other initiatives to improve opportunities for livelihood.

### 3 **Building Community**

Through fostering racial and religious harmony and promoting understanding across cultures and languages.

Through education, training, activities and campaigns to raise awareness and preparedness in the event of health, environmental and other large-scale emergencies affecting Singapore.

### **Rebuilding Lives**

Through a helping hand for disadvantaged individuals, families or communities.

# KEY HIGHLIGHTS

FY2015/2016

Programme Grants:

**\$9.8 million**

— **13** —  
programmes

**65,000**

beneficiaries

*under the*  
Temasek Emergency  
Preparedness Fund

**6,500** beneficiaries

 **4,200** children

**1,350** elderly



 **650** families

**300** youths



*under the*  
Balaji Sadasivan, Ee Peng Liang  
and Temasek Cares Endowments

---

# CHAIRMAN'S MESSAGE



Several of our pilot  
social care and  
healthcare models  
have since been  
widely replicated in  
the community.  
We care today  
for tomorrow.

Temasek Cares' funded initiatives and innovative care models have profoundly touched individual lives, families and communities. Our experience over the last seven years has enabled us to identify emerging community, social and civic needs; to build care capabilities and capacities, pilot proof of concepts, new paradigms of care and praxis to meet them. These needs go beyond those of underprivileged individuals and families to encompass dementia care, mental health and particularised needs. At times it is about finding new solutions to old problems. Several of our pilot social care and healthcare models have since been widely replicated in the community. We care today for tomorrow.

In FY2015/2016, we engaged 29 community partners and funded 13 initiatives totalling \$9.8 million. 6,500 Singaporeans directly benefitted from these programmes, aside from their families. In addition, our 'Stay Prepared' programmes funded by the Temasek Emergency Preparedness Fund reached out to 65,000 people.

---

### Pioneering Healthcare Models

Last year, President Tony Tan launched the **Temasek Cares – Kids Integrated Development Service (KIDS) 0-3 Centre**, initiated together with KK Women's and Children's Hospital and AMKFSC Community Services. Temasek Cares – KIDS 0-3 is based on a neuroscientific model that combines health, cognitive, developmental, emotional and family support for children especially from vulnerable families, during a crucial stage of their development from 0 to 3 years old. There is also a social mobility aspect to this work.

Older persons who suffer from low vision often find their lives inhibited. This is a growing problem. The **Temasek Cares – Seniors Eye Rehabilitation Programme (SEER)** spearheads the development of a rehabilitation care model so that persons with low vision are able to cope, function and move about safely in their homes and communities. By equipping them with essential skills as basic as safety, orientation and mobility within the home, seniors are able to age-in-place and enjoy a natural quality of life in their silver years.



---

### Advancing Support Networks for the Vulnerable

We also ramped up community support for Singaporeans with mental health. Studies show that 1 in 10 Singaporeans will have some form of mental illness in their lifetimes. However, many do not seek professional help due to lack of understanding and the associated stigma. They live within our communities; residents in these communities can identify and support their unfortunate neighbours with mental illness, and reach out for help. We funded the capability-building **Temasek Cares – eMHFA(S) (Mental Health First Aid Singapore)** online course by Changi General Hospital to train, accredit and certify some 900 leaders and staff of community organisations for this purpose.

# Care today for tomorrow also means investing in the young to break out of the vicious cycle that has encumbered the previous generations.



We are mindful of care fatigue by caregivers of loved ones who have long term illnesses. These caregivers may develop depression and anxiety which will in turn adversely affect their loved ones. Hence, we initiated and funded the **Temasek Cares – CarerSupport@Centres** programme by the Agency for Integrated Care that pilots a new caregiver support model with customised services, including home visits and a network of emotional and practical support, to support the caregivers and their wards.



## Activating The Community to Stay Prepared

The Sabah earthquake in June last year shocked the nation. In that disaster, Singapore lost nine of our own. Many more were affected by the traumatic event. We are thankful that therapists and counsellors trained in trauma therapy under the Temasek Cares KITS (Kids in Tough Situations) programme responded to provide psychological support to affected children and families. But we realised we could do more in providing trauma first aid.

In early 2016, Temasek Cares and KKH decided to set up the **Stay Prepared – Trauma Network for Children** as an extension of the Temasek Cares KITS programme. This will see 680 community therapists, school counsellors and teachers trained in trauma first aid, ensuring a ready pool of qualified persons to provide immediate psychological support at the point of a disaster.

Staying prepared is also about saving lives. The Singapore Civil Defence Force reports more than 1,900 people suffering from out-of-hospital cardiac arrests every year, with only a 3 per cent survival rate. Our loved ones may be that person collapsing on the street, and we want to fight for every chance of survival for them. We know that time is of the essence when the heart stops, and that Automated External Defibrillators (AEDs) can greatly increase survival rate. Therefore, Temasek Cares funded the **SMRT – Temasek Cares AED on Wheels** pilot project to equip 100 SMRT taxis with AEDs and train the drivers in administering first aid. From November 2015 to March 2016, there have been 19 successful activations.

---

### **Piloting Care Solutions for The Disadvantaged**

Care today for tomorrow also means investing in the young to break out of the vicious cycle that has encumbered the previous generations. As with everyone who believes in the value of education, we want to see children from disadvantaged backgrounds get an equal head start. Unfortunately, pre-school education is sometimes not a priority for low-income families. Working with the Association for Early Childhood Educators

Singapore, the **Temasek Cares – Project Hand-in-Hand** initiated an imaginative collaboration between active seniors and disadvantaged families to create a community-based solution to enable pre-school children to attend school regularly. This unique connection not only helps children from vulnerable families benefit from pre-school education, but also engages active seniors to continue contributing meaningfully in the community.

---

### **Championing An Inclusive Future for All**

To build an inclusive Singapore, it is important that people with disabilities are actively engaged in deciding our shared future. So Temasek Cares funded an outreach and education programme for children from special needs schools and Voluntary Welfare Organisations to participate in ‘The Future of Us’ Exhibition, through the **Temasek Cares – An Inclusive Future of Us** programme. It was moving to see the students pen their wishes and aspirations for the future of Singapore – some wrote their hopes of a safe country, others wished for better and bigger schools, and several expressed their care and love of the environment and green spaces. One child said he hopes that Singapore

will provide more job opportunities for people with special needs.

Singapore’s future belongs to them as much as to us, and we must continue to create a future for us all.

---

### **Conclusion**

It has been rewarding to see the positive outworking of our initiatives in the past year and we are passionate about touching more lives in the ensuing years. I would like to express my gratitude to Temasek Holdings and Temasek Trust for their unwavering support of the work we do, and my Board of Directors for their hours of wise counsel and guidance. Thank you, our programme partners, for sharing our passion and belief, and working alongside our management team and staff to put hands and feet to the programmes. And to our beneficiaries, thank you for allowing Temasek Cares to be a part of your lives.

Sincerely,



**Richard Magnús**  
*Chairman*



---

# BOARD OF DIRECTORS



*(From left to right)*

*Seated*

Vemala K Rajamanickam  
Richard Magnus (Chairman)  
Pang Cheng Lian

*Standing*

Mohd Salleh Marican (Treasurer)  
Benedict Cheong  
Zainul Abidin Rasheed  
Koo Tsai Kee

Temasek Cares

# CARERSUPPORT @CENTRES

*Pilot programme to build new model of structured  
caregiver support at Eldercare Centres*

## *Beneficiaries*

Caregivers of clients  
at Eldercare Centres

## *Number of Beneficiaries*

**328**  
**families**  
(Caregivers)

## *Goals*

- Establish a new care model at Eldercare Centres that supports both the elderly and their caregivers
- Help caregivers better manage their caregiving burden and sustain care for their loved ones within the community

## *Partners*

- Agency for Integrated Care (Administrator)
- Alzheimer's Disease Association
- AWWA
- SASCO Hong Kah North Day Care Centre for the Elderly
- The Salvation Army

## Background

By 2030\*

The number of elderly in Singapore

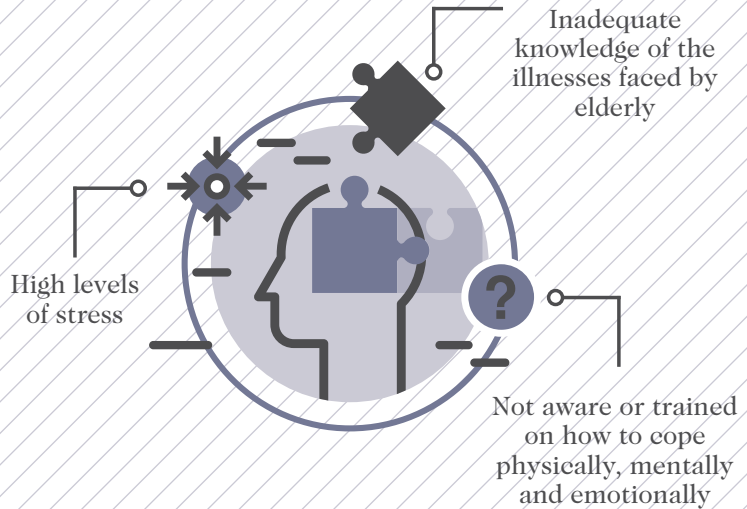
900,000

The number of elderly requiring aged care

117,000

\* Based on projections by the Ministry of Social and Family Development (MSF) and Ministry of Health (MOH)

Caregivers for the elderly face many challenges, especially if they have little support, and/or if the elderly has frail health or illnesses such as dementia.



## Programme Design

Implemented at Dementia Day Care Centres and Senior Care Centres:

### Core Services

(for all caregivers)

- Screening for caregiver burden and needs assessment
- Care coordination and casework support
- One-point contact for emotional and practical support
- Education on caregiver resources
- Consultation on Behavioural and Psychological Symptoms of Dementia

### Add-on Services (Home-based)

(where necessary)

- Assessment or intervention
- Behavioural management



Temasek Cares

# PROJECT eMHFA(S) (MENTAL HEALTH FIRST AID SINGAPORE)

*Pilot programme to build community resilience in mental health through development of an e-learning platform for MHFA(S) courses*

## *Beneficiaries*

Community leaders who in turn provide initial help to those experiencing mental distress

## *Number of Beneficiaries*

**900**

community leaders to be trained

## *Partners*

- **Changi General Hospital (Administrator)**
- **Community Organisations**

## *Goals*

- Train community leaders to recognise signs and symptoms of mental health problems
- Enhance community understanding of mental health challenges, how to provide first aid and where to seek professional help

*Background*

The Mental Health First Aid (Singapore) course is an accredited course in mental health literacy that is suitable for lay persons.

Participants learn to identify common mental health problems and provide initial help.

Participants are taught to guide the person to appropriate professional help after providing “first aid”.



Studies show that

**1 in 10**  
**people in Singapore**  
**will have some form**  
**of mental illness**  
in their lifetime.

(A population-based survey of mental disorders in Singapore, 2012)

---

**Early detection and intervention significantly improve the outcomes for people with or at risk of mental health problems**

---

As key touchpoints for the general public, community-based organisations trained in mental health literacy will be able to serve as the frontline in early detection and intervention for mental health issues amongst residents and members, especially those in the vulnerable groups.

---

## Programme Design

---



**E-learning course**



**Half a day in-class training time for MHFA(S) certification**



**900 community leaders to be trained**

Temasek Cares

# SENIOR EYE REHABILITATION (SEER)

*Pilot programme to develop new care model and build community capability in low vision rehabilitation for older persons*

## *Beneficiaries*

Older persons diagnosed  
with low vision

## *Partners*

- Agency for Integrated Care (Administrator)
- National University Hospital
- Singapore National Eye Centre
- Tan Tock Seng Hospital
- Service Providers

## *Number of Beneficiaries*

**2,240**  
**older persons**  
**with low vision**  
(estimated)

**30 Occupational Therapists**  
to be trained in low  
vision rehabilitation

## *Goals*

- Develop a structured care model for older persons with low vision and establish proof of concept
- Build community capability in low vision rehabilitation for older persons

### Background

Low vision is commonly defined as visual impairment that cannot be corrected by prescriptive glasses or medical intervention, and that hinders daily activities.

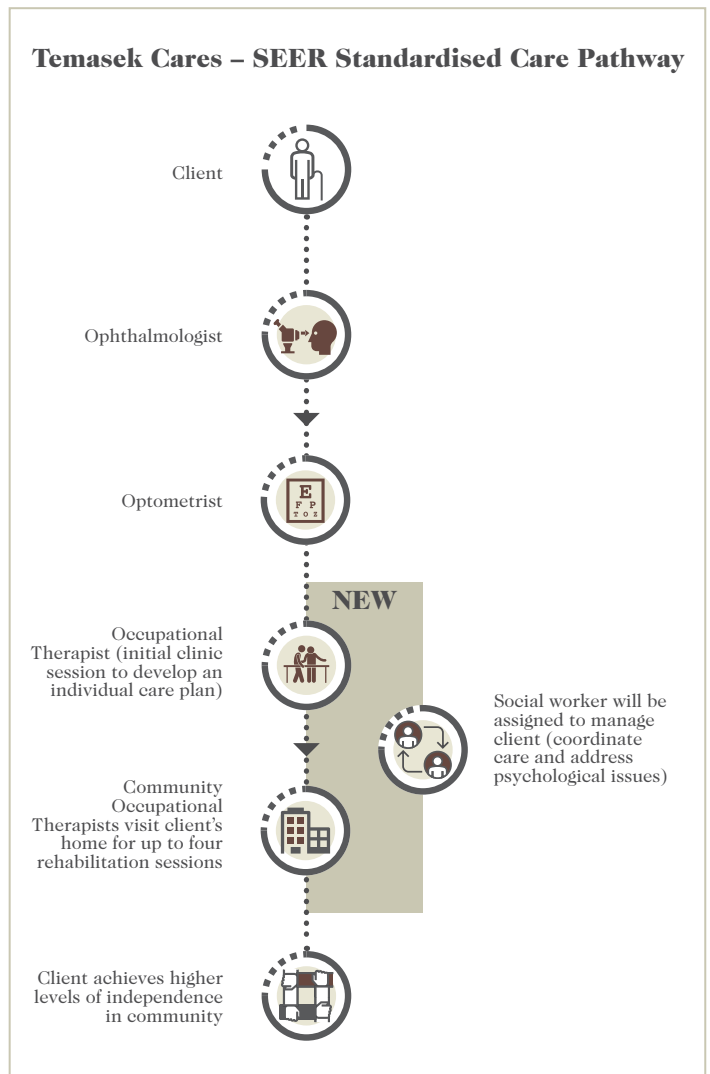
Currently, there are no standardised or structured programmes for low vision rehabilitation that will help clients transit to community care where they can learn how to cope with low vision and maintain functional abilities at home.

Older persons diagnosed with low vision often retain usable vision and can learn ways to function effectively and safely within their homes and community with the help of a multi-disciplinary team of:

- 1 — Ophthalmologists
- 2 — Optometrists
- 3 — Occupational Therapists
- 4 — Social Workers

## Programme Design

Building community capability in low vision rehabilitation by developing a training pedagogy relevant to the Singapore context



# HELPING FAMILIES IN NEED ACCESS SIGNPOSTS TRAINING

*Helping needy parents of children with developmental needs  
afford the cost of Signposts training*

## Goals

- Equip needy parents and caregivers to manage the behaviour of their children (between 3 and 15 years old) with developmental needs
- Make Signposts training more accessible to the public by translating materials into vernacular languages

## Number of Beneficiaries

Parents or caregivers of

**1,950  
children**

with developmental needs

## Partner

**KK Women's and  
Children's Hospital  
(Administrator)**

## Beneficiaries

Families of  
children with  
developmental needs

Temasek Cares

# AN INCLUSIVE FUTURE OF US

*Temasek Cares signature SG50 event to engage special needs persons in building an inclusive Singapore community*

## Partners

- National Council of Social Service (Administrator)
- Ministry of National Development
- Special Education Schools

## Goals

- Include people with special needs in nation building through active participation in “The Future of Us” exhibition
- Create public awareness of the need to build an inclusive community that would include people with special needs

## Beneficiaries

Children with special needs

## Number of Beneficiaries

**5,300**

children with special needs and their caregivers

# EQUAL

## EQUINE-ASSISTED LEARNING PROGRAMME FOR SPECTRA SECONDARY SCHOOL

*Building socio-emotional, communication and  
life skills in vulnerable youths through equine therapy*

*Beneficiaries*

**Vulnerable Youths**

*Partner*

**Spectra  
Secondary School**

*Number of Beneficiaries*

Approximately  
**600**  
Spectra students

(200 students in each cohort over three years)

*Goal*

**Vulnerable youths gain  
confidence and life skills to  
relate better with their peers  
and teachers, as well as to  
perform better in school.**



“There was a boy who after riding a temperamental horse, commented that he now understands how his teachers feel when he does not obey their instructions.”

*Principal*

---

# EQUAL

*(EQUine-Assisted Learning)*

## *Background*

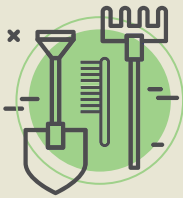
.....

EQUAL (EQUine-Assisted Learning) is an equine therapy programme run by Equal Ark Singapore, and is aimed at equipping vulnerable youths with social, communication and life skills. Some Spectra students require more help in building self-esteem and confidence, as well as in socialising with peers. EQUAL would thus be beneficial in helping them develop greater confidence and emotional maturity.



## Programme Design

The EQUAL curriculum comprises four main components:



### Horsemanship

#### Activities

Cleaning stables and grooming horses

#### Goals

- Learning how to care for another
- Building confidence and communication skills
- Improving impulse control



### Horse Play

#### Activities

Group work with and around horses

#### Goals

- Learning how to communicate with non-verbal cues
- Strengthening negotiation and teamwork skills
- Developing conflict management skills



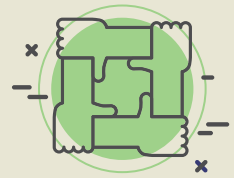
### Horse Riding

#### Activities

Riding lessons

#### Goals

- Overcoming the fear of failure
- Developing perseverance
- Building confidence



### Interactive Vaulting

#### Activities

Tasks performed on and around horses

#### Goals

- Fostering teamwork and confidence
- Learning respect for the horse
- Encouraging social interaction

Temasek Cares

# KIDS INTEGRATED DEVELOPMENT SERVICE (KIDS) 0-3 CENTRE

*One-stop integrated health, social and educational services for vulnerable children (aged 0 to 3) and their mothers*

## *Beneficiaries*

Vulnerable mothers, mothers-to-be and children three years old and below

## *Number of Beneficiaries*

**300**  
mothers and children  
(over three years)

## *Goals*

- **Optimise development and learning of children from vulnerable families through home visits, centre-based services and community partnerships**
- **Establish an integrated model of health and social support services for vulnerable children and their mothers**

## *Partners*

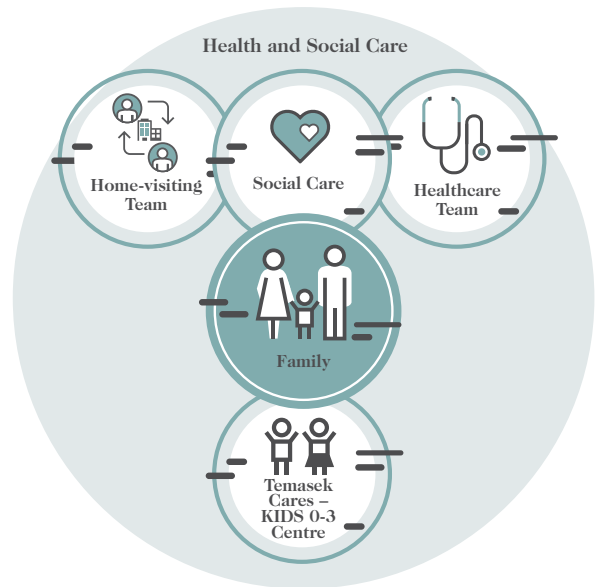
- **KK Women's and Children's Hospital (Administrator)**
- **AMKFSC Community Services**





# TEMASEK CARES KIDS 0-3 CENTRE

## KIDS 0-3 Model



### *Background*

Studies show that children of socially and economically disadvantaged parents are at higher risk of compromised development by the time they enter pre-school.

In July 2014, the Temasek Cares – KIDS 0-3 Programme was launched to provide a comprehensive spectrum of care through a multi-layered and integrated health and social care support system. The Temasek Cares – KIDS 0-3 Centre was subsequently opened in October 2015 as a venue in the community for social networking and support.

The Temasek Cares – KIDS 0-3 Centre is located at the void deck of Block 643, Ang Mo Kio Avenue 5. The Centre has a conducive and welcoming environment where mothers and families in the programme can socialise, participate in learning activities or facilitated play sessions together with their children.

# Programme Design

## 1 — (6-20 weeks of pregnancy)



Potential case is picked up by Temasek Cares – KIDS 0-3 team

## 2 — (ANTENATAL: 21-40 weeks of pregnancy)



Counselling and education on:

- Self-care during pregnancy
- Family planning
- Breastfeeding
- Nutrition and healthy habits to help baby grow well during pregnancy
- Doctor appointments
- Preparing for labour and delivery

## 3 — (POSTNATAL: 0-3 years old)



Counselling and education on:

- Starting new home routines to care for self and baby
- Nutrition, rest and emotional care after delivery
- Knowing and managing baby's needs, hygiene, feeding, crying, bathing, diaper change, sleeping and responses
- Importance of immunisations, regular developmental screening and health checks for baby
- Daily interaction and bonding with baby
- Understanding baby's growth and learning needs

## 4 — Activities at the Temasek Cares – KIDS 0-3 Centre:



### FOR CHILDREN AND PARENTS

- Track/monitor children's physical growth
- Child developmental assessments
- Play sessions for children with their parents/mothers
- Assess family's needs and refer appropriate community resources
- Information and guidance on budgeting and resources for improving skills for employment



### COMMUNITY AND SOCIAL NETWORKING

- Get-togethers to build friendships among families, staff and volunteers
- Organised activities and learning trips to places of interest for mothers and children

**“My son used to be very shy because I didn't let him mix around. But after coming to the Centre, he is more jovial, energetic and friendly. He interacts more with us too.”**

**Nordiana, 24**

*Referred to Temasek Cares – KIDS 0-3 by the Ang Mo Kio Family Service Centre*



Temasek Cares

# BURSARY PROGRAMME FOR PRE-SCHOOLERS

*Bursary programme to address obstacles to regular school attendance  
for pre-schoolers from vulnerable homes*

## Goals

- Benefit more children from vulnerable families with pre-school education
- Provide children with bursary for nutrition and wellness support, as well as school-related expenditure

## Partner

Association for Early Childhood Educators  
Singapore (AECES)

## Beneficiaries

# 215

Pre-school children  
from vulnerable families

(Over three years)

Temasek Cares

# PROJECT HAND-IN-HAND

*Pilot programme to enable pre-schoolers  
from vulnerable homes to attend school regularly*

*Partner*

Association For Early Childhood  
Educators Singapore (AECES)

*Goals*

- Enable pre-school children with poor attendance records to attend and benefit from pre-school education
- Engage active seniors and equip them to support vulnerable/ low-income families in the community by bringing pre-school children to and fro school daily

*Beneficiaries*

Pre-school children from  
vulnerable families

.....  
whose parents may not be able to send them  
to pre-school regularly due to their work  
schedule or other difficulties

*Number of Beneficiaries*

**430** Children

.....  
**366** Carers

Over three years

# SMRT-TEMASEK CARES AED ON WHEELS

*Pilot programme to build community preparedness through equipping SMRT taxis with Automated External Defibrillators (AEDs)*

## 100 SMRT taxis

.....  
equipped with AEDs

### Goals

- Improve the community's response rate and time to OHCA cases
- Establish taxis as first responders to provide AEDs and assistance to OHCA cases

### Partners

- SMRT Taxis (Administrator)
- Singapore Heart Foundation

### With support from

- National Fire and Civil Emergency Preparedness Council
- National Taxi Association
- Singapore Civil Defence Force

### Beneficiaries

#### Persons having out-of-hospital cardiac arrests (OHCA)

.....  
Survival rate falls by 7-10% for every minute without medical intervention



---

SMRT – Temasek Cares

# AED ON WHEELS



## *Background*

Every year there are

**1,900<sup>1</sup>**

Out-of-Hospital Cardiac Arrests, of which the survival rate is

**3%<sup>1</sup>**

**“This was my first activation and with the good training conducted by the Singapore Heart Foundation, I was able to remain calm and proceed with the checks (on the pulse and breathing of the patient). I’m very happy to be able to play an active role in society by saving lives.”**

**Simon Ngiam, SMRT Taxi Partner**

*Responded to an OHCA alert within 4 minutes on 23 Nov 2015*

---

<sup>1</sup> Source: Singapore Civil Defence Force (website)

<sup>2</sup> Source: The Straits Times “SCDF Rolls Out Tech Tools for Faster Response in Saving Lives”, 18 April 2014



# 11 mins<sup>1</sup>

Time taken for an ambulance to arrive at the scene of an emergency.

Bystanders who administer CPR can increase OHCA survival rate by more than two-fold, while using an AED can raise the rate by 11 times<sup>2</sup>.

## Programme Design



- 1 Voluntary participation by 100 SMRT taxi drivers
- 2 Participating taxi drivers are trained to perform CPR and use an AED



- 3 Participating taxi drivers are registered with the myResponder mobile app to receive alerts
- 4 Drivers who are able to respond will confirm that they are able to help via the app



- 5 Up to two taxis can respond to an emergency, with one acting as a back-up for the other
- 6 The taxi driver who arrives at the scene will deliver the AED to support first responders to the emergency call

Stay Prepared

# TRAUMA NETWORK FOR CHILDREN

*Pilot programme to establish a new model  
of community-based psychosocial support and care  
for children with trauma*

*Partners*

- KK Women's and Children's Hospital (Administrator)
- Community Organisations
- Madrasahs under Majlis Ugama Islam Singapura (MUIS)
- Schools under the Ministry of Education
- Special Education Schools
- Voluntary Welfare Organisations (VWOs)

*Beneficiaries*

**Children affected  
by traumatic situations**

*Goals*

- Develop a validated model and training pedagogy for providing trauma first aid to children in traumatic events that is community-based and culturally sensitive
- Equip the community, including schools under the Ministry of Education, with the capability to provide adequate and immediate support for children post trauma
- Establish a trauma learning network that includes community and school-based trauma-informed practitioners
- Raise awareness of trauma in children amongst the general public



*Number of Beneficiaries*

**3,040**  
**children and**  
**their caregivers**  
(direct beneficiaries)

---

**680**  
community-based therapists  
and school counsellors  
trained in trauma first aid

---

**100**  
community-based therapists  
and school counsellors  
trained in Trauma-Focused  
Cognitive Behavioural  
Therapy

---

**10,000**  
children and their families  
educated on trauma care

# Stay Prepared TRAUMA NETWORK FOR CHILDREN

## Background

In April 2014, Temasek Cares and KK Women's and Children's Hospital launched a three-year pilot programme, Temasek Cares KITS (Kids in Tough Situations), to build the capability of the community in providing trauma therapy for children. The Stay Prepared – Trauma Network for Children builds on the success of the Temasek Cares KITS programme. It aims to enhance community-based resources to adequately provide psychosocial trauma support for children and families in schools and in the community. It will equip community-based organisations and schools who serve children with trauma-specific skills and link them together in a trauma learning network.

## Post trauma feelings:



Fear



Anger



Shame



Sadness

## Symptoms of trauma:



Re-experiencing  
trauma memories



Avoidance



Negative Mood



Irritability



Hypervigilance

## Trauma First Aid

To provide immediate support and equip children and caregivers with coping skills

## Trauma Focused-Cognitive Behavioural Therapy (TF-CBT)

For children with post-trauma difficulties that require more intensive psychological support

# Programme Design



---

## Developing a Pedagogy for Trauma First Aid and Providing Training

KK Women's and Children's Hospital will be developing a training pedagogy for a two-part trauma first aid course that is suitable for Singapore schools and the community. 680 community-based therapists and school counsellors will be trained.



---

## Scaling up Trauma-Focused Cognitive Behavioural Therapy Capability in the Community and Schools

100 community-based therapists and school counsellors will be trained in Trauma-Focused Cognitive Behavioural Therapy.



---

## Establishing a Learning and Support Network for Practitioners

A learning network will be set up for practitioners in trauma therapy to:

- Stay connected with each other and be easily reachable as a group
- Stay up-to-date on trauma-informed care
- Receive mentoring and consultation
- Attend sharing sessions or webinars on the latest trauma-related information
- Have platforms to share ideas and resources



---

## Raising Awareness of Trauma in Children

Outreach efforts to 10,000 children and their families to increase awareness on trauma, its impact, as well as how and when to seek support or treatment for a child with signs of trauma.

Temasek Cares

# 'STAY PREPARED' COMMUNITY OUTREACH AND PUBLIC EDUCATION PROGRAMME

*Three-day event to raise awareness on emergency preparedness*

## Partners

- KK Women's and Children's Hospital
- Singapore Civil Defence Force
- Singapore Heart Foundation
- SMRT Taxis
- ST Engineering

## Beneficiaries

Families and general community

## Number of Beneficiaries

Reached out to

**12,000**

members of the public

## Goal

Raising public awareness on the importance of community resilience and preparedness in emergencies

# Featured Outreach Partners



## Singapore Civil Defence Force

- Home fire safety tips
- Number to call during emergencies
- How to use a fire extinguisher



## KK Women's and Children's Hospital

### Trauma in children and youth

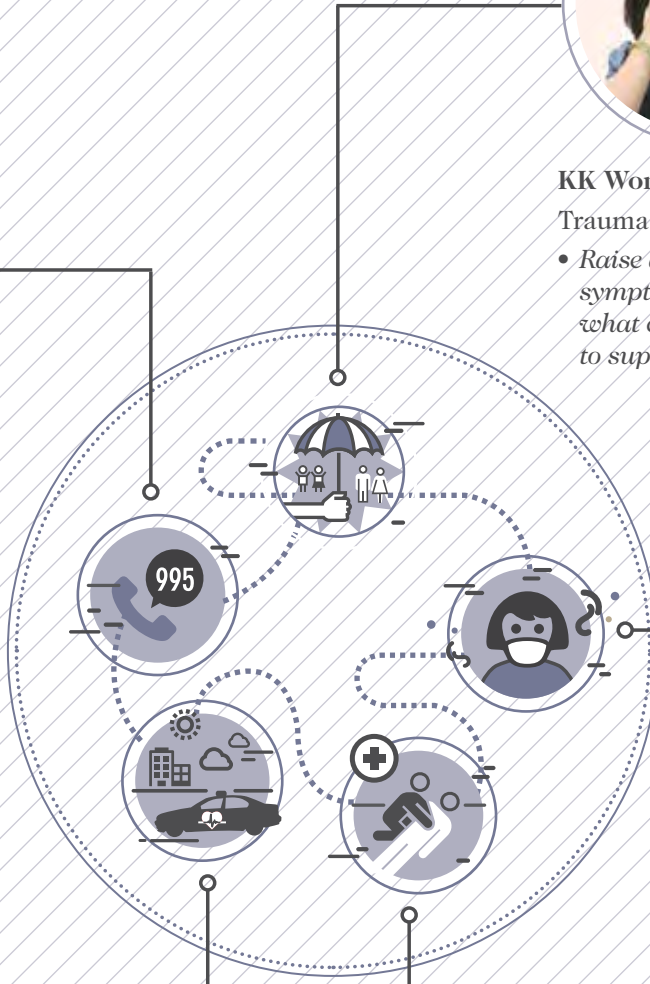
- Raise awareness of trauma symptoms in children, and what caregivers can do to support their children



## SMRT Taxis

SMRT – Temasek Cares  
AEDs on Wheels programme

- How taxis equipped with Automated External Defibrillators can assist first responders in the event of an out-of-hospital cardiac arrest (more details of the programme on Pages 20-23)



## ST Engineering

Air+ Smart Masks and ventilators for the family (including children)

- How to wear masks properly and how ventilators can help wearers breathe more comfortably



## Singapore Heart Foundation

Chest compression resuscitation and use of Automated External Defibrillators

- Basic resuscitation skills that can save lives
- How to recognise persons with cardiac arrest and what we can do

# BALAJI SADASIVAN HEALTHCARE BUILDING CAPABILITY PROJECT

*Building capabilities of intermediate  
and long-term care sector in Singapore*

## Background

Set up in 2010, the Balaji Sadasivan – Healthcare Building Capability Project aims to build manpower capability in the Intermediate and Long-Term Care sector, so as to meet the needs of Singapore’s ageing population. Since inception, a total of 38 study awards have been given to students in the fields of occupational therapy, physiotherapy, nursing and health services management. In FY2015/2016, study awards were given to 10 recipients.



## Partners

- Agency for Integrated Care (Administrator)
- Institute of Technical Education
- Nanyang Polytechnic
- Ngee Ann Polytechnic
- Republic Polytechnic

## Goal

**More therapists and nurses trained for the intermediate and long-term care sector by providing study awards and training grants**

## Selection Committee (2010 to 2015)

Agency for Integrated Care  
Changi General Hospital  
ITE College East  
Nanyang Polytechnic  
Ngee Ann Polytechnic  
Singapore Association of Occupational Therapists  
Singapore Physiotherapy Association  
Temasek Cares

## Total number of study awards given by field of study:

Diploma in Physiotherapy	8
Diploma in Occupational Therapy	17
Diploma in Health Services Management	3
Diploma in Nursing	8
NITEC in Nursing	2
<b>Total</b>	<b>38</b>

(From 2010 to March 2016)

# EE PENG LIANG SPECIAL NEEDS BUILDING CAPABILITY PROJECT

*Building capabilities of the special needs sector in Singapore*

## Background

The special needs sector serves people with developmental, intellectual, physical, sensory or multiple disabilities. With growing demand for early intervention services for persons diagnosed with special needs, the Ee Peng Liang – Special Needs Building Capability Project was set up in 2011 to train skilled manpower for this sector. Since 2011, 41 study awards have been given to individuals with a passion to serve in this sector.



## Partners

- National Council of Social Service (Administrator)
- Nanyang Polytechnic
- National University of Singapore
- Ngee Ann Polytechnic
- Temasek Polytechnic

## Goal

More early intervention teachers and therapists trained for special needs sector through study awards and training grants

## Selection Committee (2011 to 2015)

National Council of Social Service  
Ngee Ann Polytechnic  
Temasek Cares  
Temasek Polytechnic  
Industry practitioner

## Total number of study awards given by field of study:

Diploma in Early Childhood Education/Child Psychology	29
Diploma in Occupational Therapy/ Physiotherapy	9
Masters in Speech and Language Pathology	3
<b>Total</b> (From 2011 to March 2016)	<b>41</b>

---

# MANAGEMENT NOTES

In FY2015/2016, Temasek Cares committed \$9.8 million in grants towards 13 programmes to support 6,500 needy Singaporeans and their family members/caregivers, as well as to enhance emergency preparedness for 65,000 people in the Singapore community.

Committed programme grants for the current financial year declined almost 20 per cent compared to FY2014/2015. This was due to the cost of the programme to distribute Stay Prepared Starter Kits (containing three N95 masks each) to 1.2 million households in Singapore in 2014. Excluding this programme, total programme grants would have risen 10 per cent for FY2015/2016.

In recent years, Temasek Cares has supported more programmes which are larger in scale, scope and reach. An example is the Temasek Cares – Kids Integrated Development

Service (KIDS) 0-3 programme which integrates medical, psychosocial and developmental support for vulnerable mothers and their babies from pre-natal stage till when the child is three years old, and which includes the opening of the first ever Temasek Cares – KIDS 0-3 Centre in Ang Mo Kio. Such programmes require larger grants and more time to establish proof of concept. As a result, the total number of programmes supported has declined over the last three years, but the average grant size per programme has increased. The number of direct beneficiaries from our programmes has also increased from 4,900 in FY2014/2015 to 6,500 in FY2015/2016 (excluding the beneficiaries under the Temasek Emergency Preparedness Fund).

Our expense ratio<sup>1</sup> for FY2015/2016 was 12 per cent, which is in line with our performance over the years.

## *Management Team*

---

Woon Saet Nyoon

*General Manager*

Kee Kirk Chuen

*Deputy General Manager*

Joan Pereira

*Assistant General Manager*

<sup>1</sup> Expense Ratio is defined as the ratio of Operating and Capital Expenditure to the Total Committed Budget for the financial year. For FY2015/2016, the expense ratio was 12 per cent (\$1,283,308/\$11,083,308).

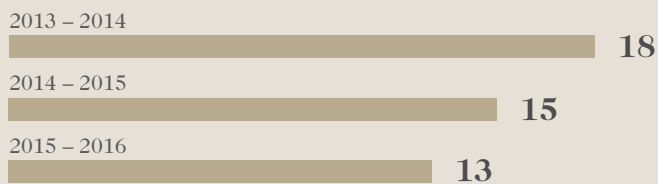
## Total Budget



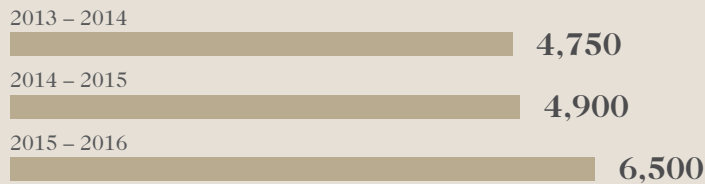
## Committed Programme Grants



## Number of Programmes



## Number of Beneficiaries (excluding beneficiaries under the Temasek Emergency Preparedness Fund)



## Special Donation



Donors: 'Up Close with Lee Kuan Yew' Book Project Committee and publisher Marshall Cavendish

Amount: \$50,000

Beneficiaries: 20 pre-schools run by Voluntary Welfare organisations

Goal: To fund programmes and initiatives that strengthen the language foundation of pre-schoolers

The Directors' Report and Financial Statements for FY2015/2016 are available at [www.temasekcares.org.sg](http://www.temasekcares.org.sg).

---

# PROGRAMME LISTING AND CONTACTS

## **Balaji Sadasivan – Healthcare Building Capability Project**

---

Agency for Integrated Care  
Tel: 6632 1144  
Email: BalajiSA@aic.sg

## **Ec Peng Liang – Special Needs Building Capability Project**

---

National Council of Social Service  
Tel: 6589 5513  
Email: kristine\_choi@ncss.gov.sg

## **EQUAL (EQUine-Assisted Learning) Programme for Spectra Secondary School**

---

Spectra Secondary School  
Tel: 6320 7140  
Email: S\_B\_Sivaganesh@spectra.edu.sg

## **Helping Families in Need Access Signposts Training**

---

KK Women's and Children's Hospital  
Tel: 6337 7646  
Email: angela.tang.sc@kkh.com.sg

## **SMRT – Temasek Cares AED on Wheels**

---

SMRT Taxis Pte Ltd  
Tel: 6866 2745  
Email: ZaimeBH@smrt.com.sg  
Tel: 6866 2766  
Email: LeeHY@smrt.com.sg

## **Stay Prepared – Trauma Network for Children**

---

KK Women's and Children's Hospital  
Tel: 6394 3942  
Email: Mercy.Teo.PL@kkh.com.sg

## **Temasek Cares – Bursary Programme for Pre-schoolers**

---

Association for Early Childhood  
Educators (Singapore)  
Tel: 6281 4989  
Email: alicia@aeces.org

## **Temasek Cares – CarerSupport@Centres**

---

Agency for Integrated Care  
Tel: 6593 3874  
Email: alexandra.chua@aic.sg

## **Temasek Cares – Kids Integrated Development Service (KIDS) 0-3 Centre**

---

KK Women's and Children's Hospital  
Tel: 6225 5554  
Email: kidscommonid@kkh.com.sg

## **Temasek Cares – Project eMHFA(S) (Mental Health First Aid Singapore)**

---

Changi General Hospital  
Tel: 6850 4643  
Email: Aradhana\_Gulati@cgh.com.sg

## **Temasek Cares – Project Hand-in-Hand**

---

Association for Early Childhood  
Educators (Singapore)  
Tel: 6281 4989  
Email: alicia@aeces.org

## **Temasek Cares – Senior Eye Rehabilitation (SEER)**

---

Agency for Integrated Care  
Tel: 1800 650 6060  
Email: seer@aic.sg



**Temasek Cares CLG Limited**

---

*Co. Regn No. 200909154Z*

60B Orchard Road

#06-18 Tower 2

The Atrium@Orchard

Singapore 238891

Tel: (65) 6828 8752

Fax: (65) 6828 8652

[www.temasekcares.org.sg](http://www.temasekcares.org.sg)

